

Eclipse Tips and Tricks

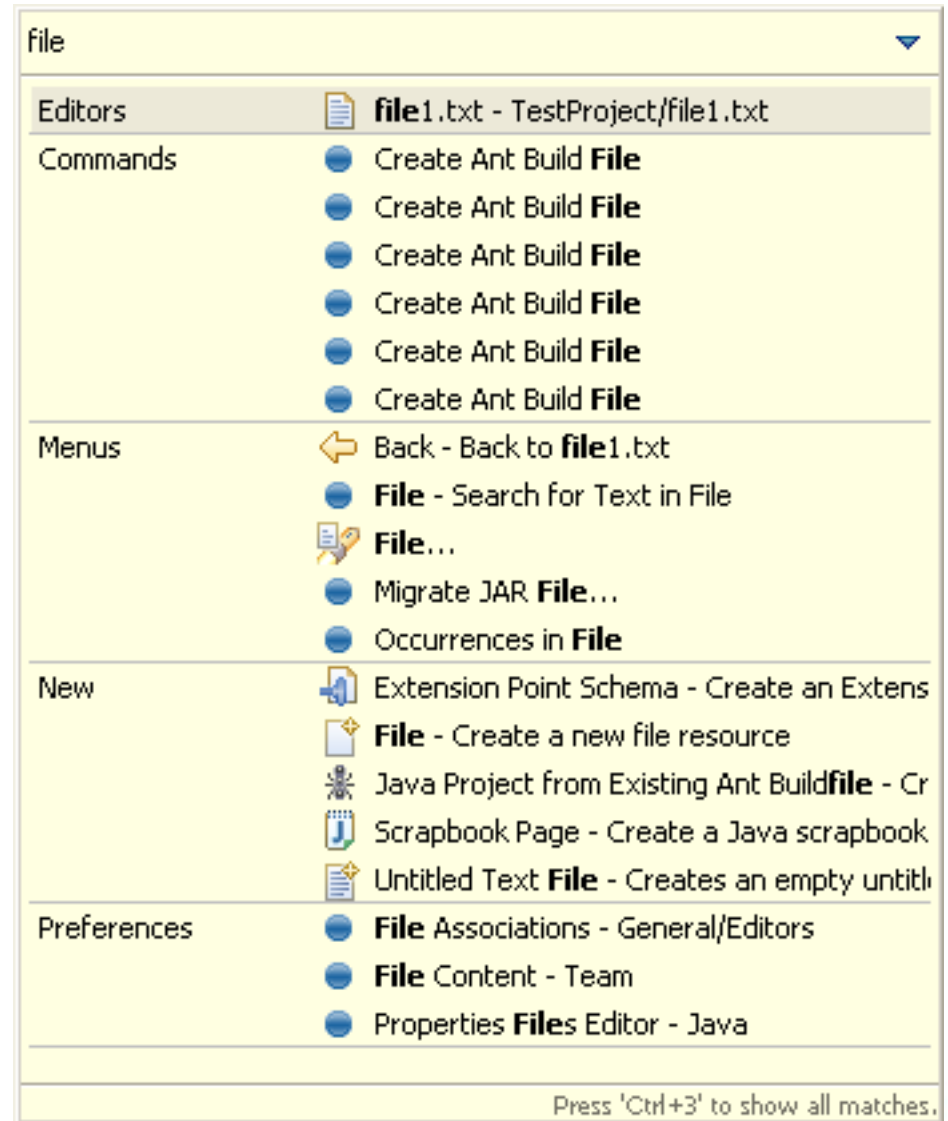
Workbench IDE
November 2008

Now, where was I?

Workbench editors keep a navigation history. If you open a second editor while you're editing, you can press **Navigate > Backward** (Alt+Left Arrow, or the back arrow on the workbench toolbar) to go back to the last editor. This makes working with several open editors a whole lot easier.

Ctrl+3 Quick Access

You can quickly find all manner of contributions with the Ctrl-3 binding including (but not limited to) open editors, available perspectives, views, preferences, wizards, and commands. Simply start typing the name of the item you wish to invoke and we will attempt to find something in the Workbench that matches the provided string.



Ctrl+E Editor List

You can quickly switch editors using the Ctrl+E keybinding which opens a list of all open editors. The list supports type-ahead to find the editor as well as allows you to close editors using a popup menu or the Delete key.

Like to start afresh each session?

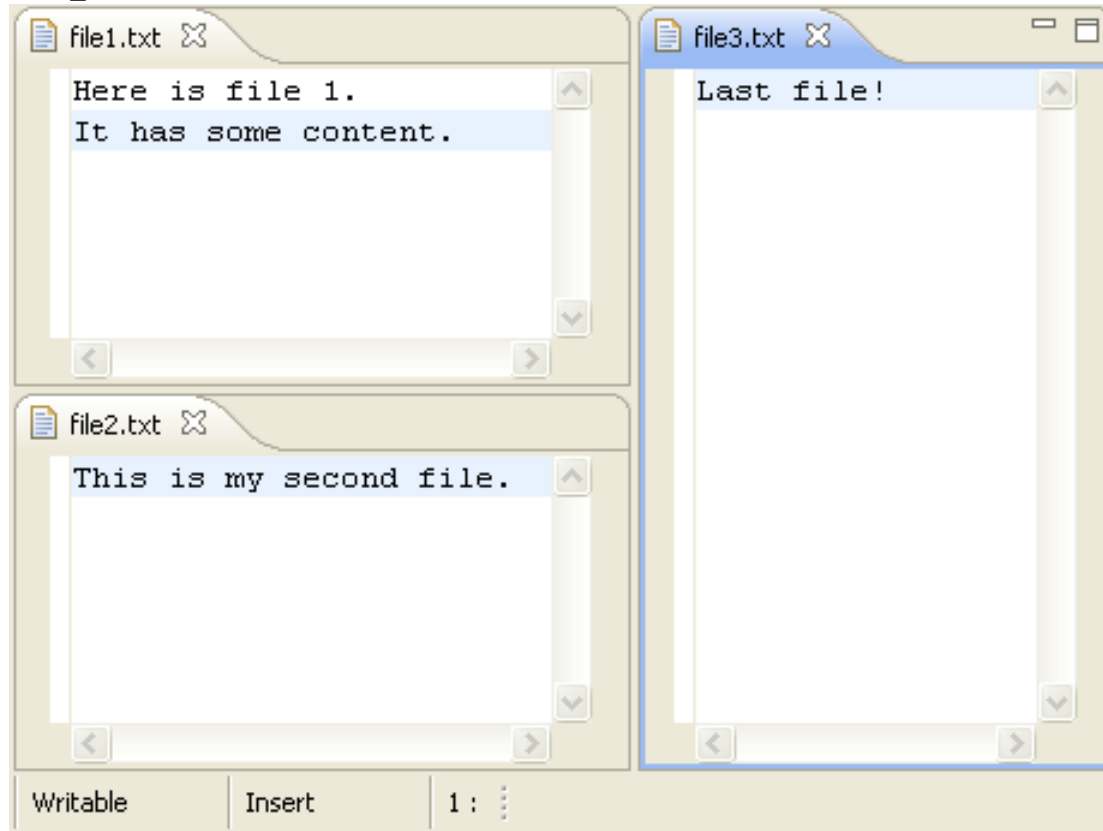
A setting on the **General > Editors** preference page closes all open editors automatically whenever you exit. This makes start-up cleaner and a bit faster.

Opening editors using drag and drop

You can open an editor on an item by dragging the item from a view like the Project Explorer or Package Explorer and dropping it over the editor area.

Tiling the editor work area

You can use drag and drop to modify the layout of your editor work area. Grab an editor tab and drag it to the edge of the editor work area. The arrow dock icons (e.g.,) indicate which way the editor work area will split.

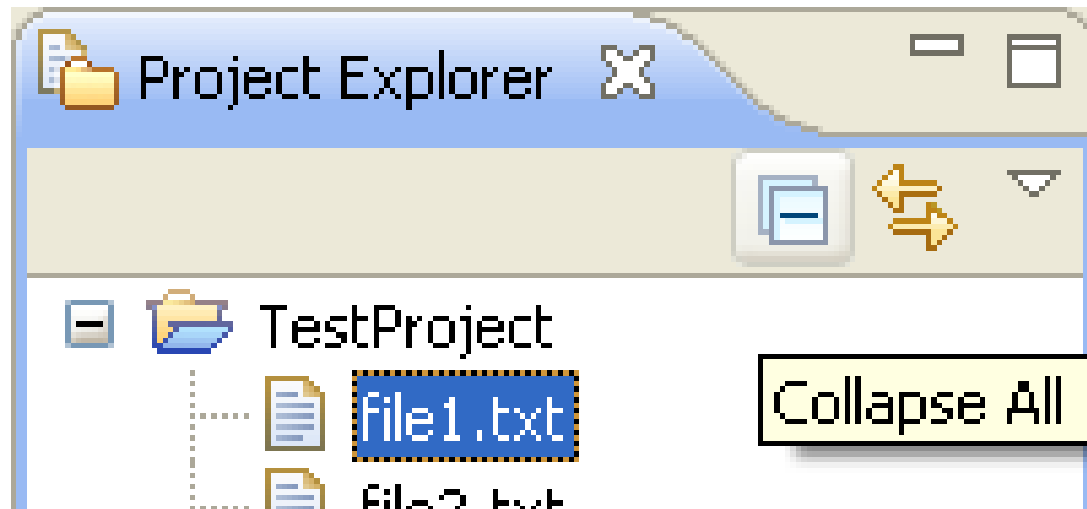


Open editors with a single click

Use the Open mode setting on the **General** preference page to activate single click opening for editors. In single click mode, a single click on a file in the Project Explorer view (and similar views) selects and immediately opens it.

Collapsing all open items

Use the **Collapse All** button on the toolbar of the Project Explorer view (and similar views) to collapse all expanded project and folder items.



Global find/replace

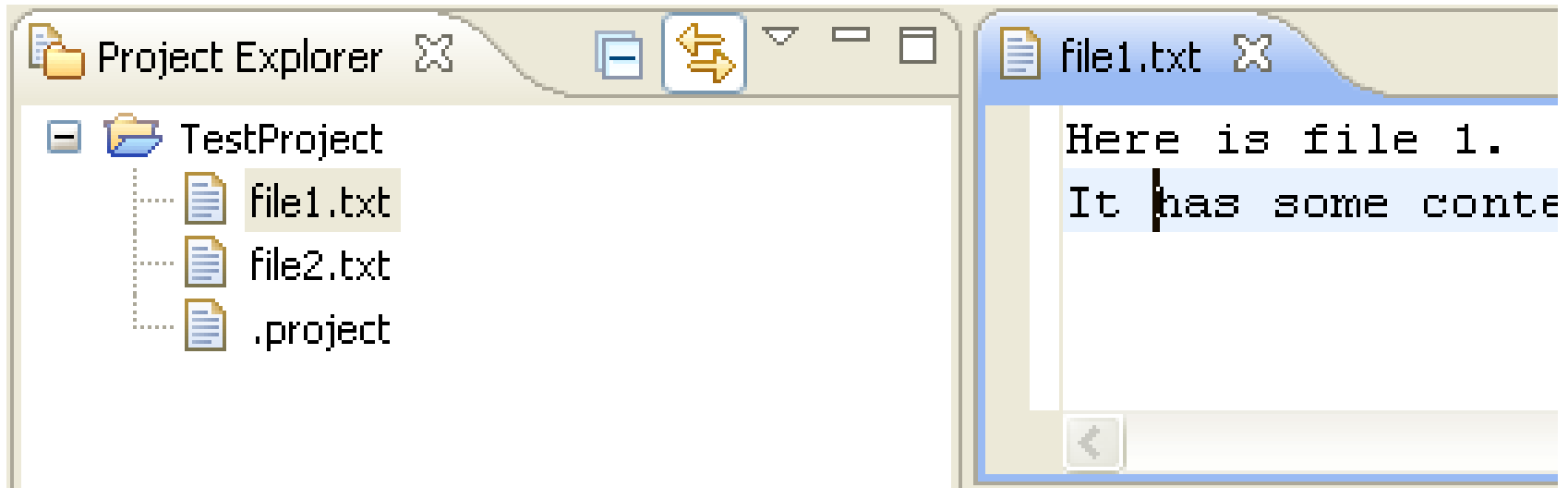
Use **Search > File** from the main menu to specify the text that you want to replace and the scope in which you want to replace it. Then press **Replace....**

Replace from Search view

You can replace the matches in the files by using **Replace...** or **Replace Selected...** from the context menu in the Search view.

Linking view to current open editor

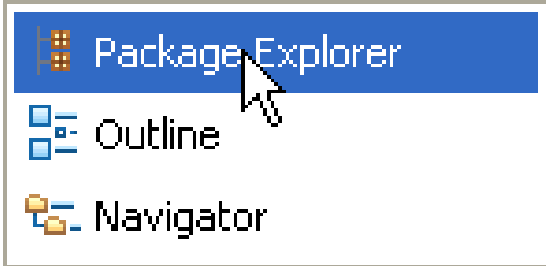
The resource Project Explorer view (and similar views) is not tightly linked to the currently open editor by default. This means that closing or switching editors does not change the selection in the Project Explorer view. Toggling the **Link with Editor** button in the Project Explorer view toolbar ties the view to always show the current file being edited.



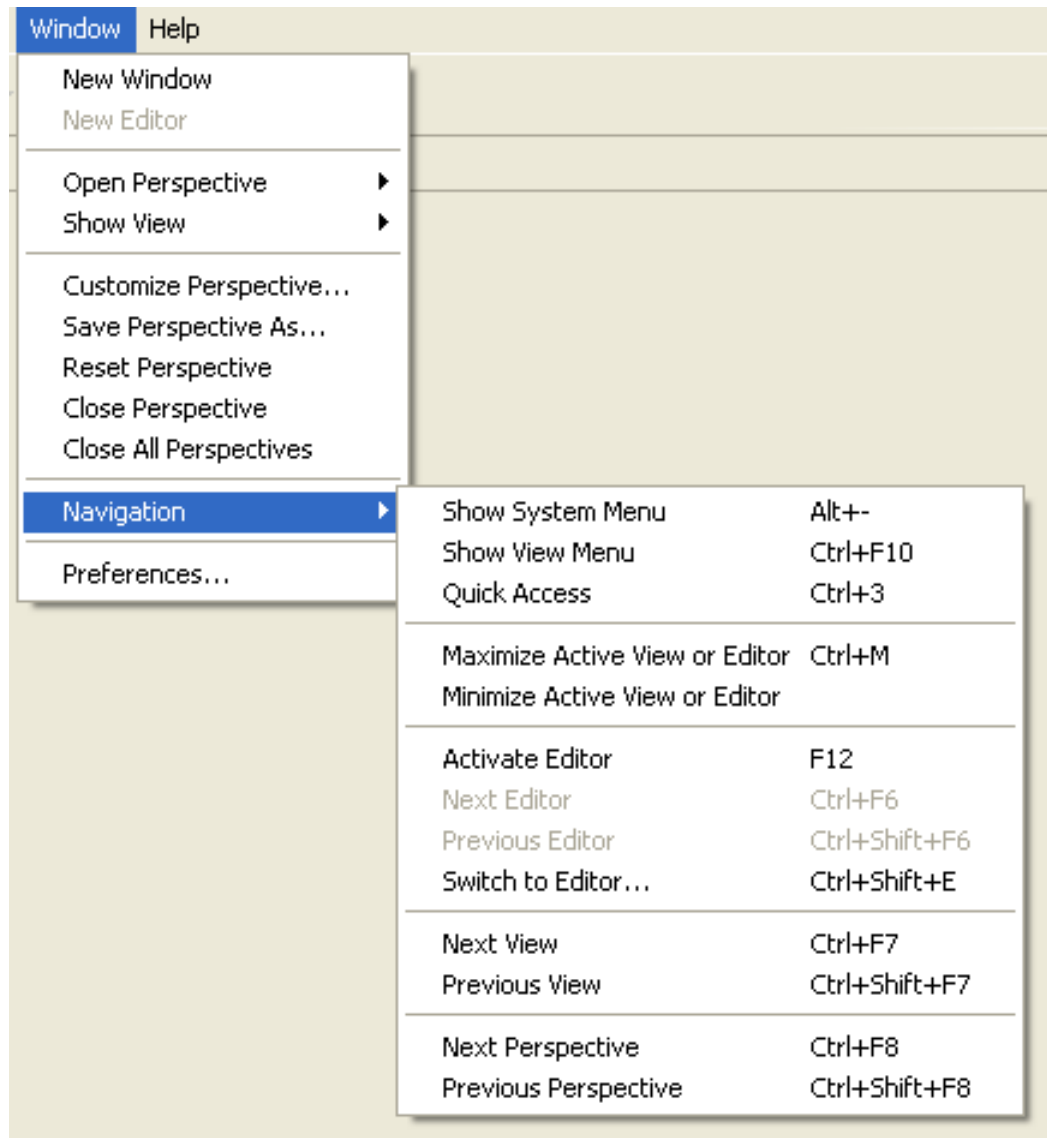
Manual editor / view synchronization

The **Navigate > Show In** command provides a uniform way to navigate from an open editor to a view showing the corresponding file (e.g., in the resource Project Explorer view), or from a file selected in one view to the same file in a different view (e.g., from the resource Project Explorer view to the Packages Explorer view). Typing **Alt+Shift+W** opens a shortcut menu with the available view targets.

```
public class JunitTestCase extends TestCase {  
    public void  
  
    public void testFailure() {  
        ArrayList list= new ArrayList();  
        list.add("1");  
        list.add("2");  
    }  
}
```



Quick navigation between views, editors and perspectives



Pinning editors

When the **Close editors automatically** preference is active (found on the **General > Editors** preference page), you can stop an editor from being closed by using the **Pin Editor** button which appears in the workbench toolbar.

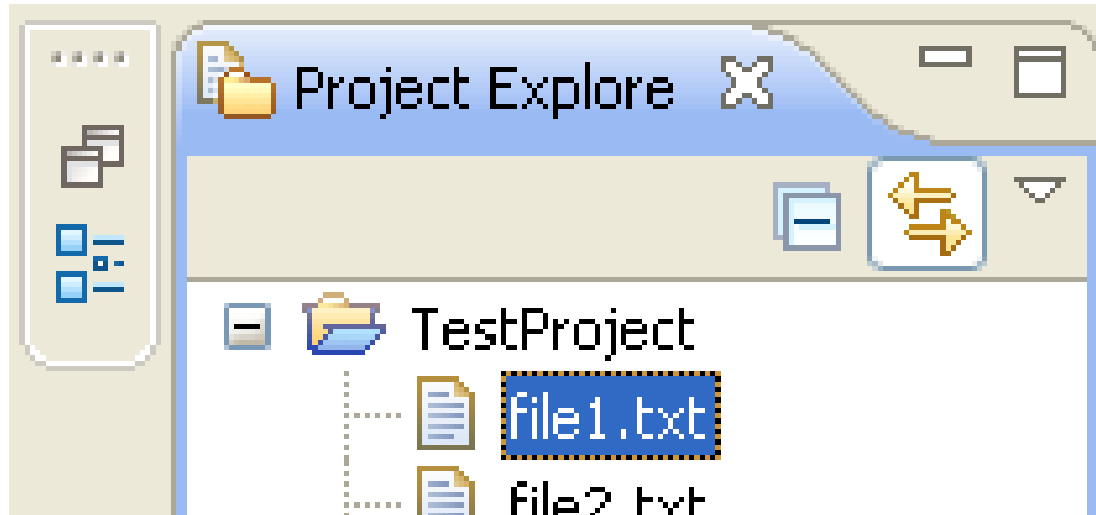


Reordering editor tabs

You can rearrange the order of open editors by using drag and drop. Grab the editor tab and drag it to the position you want the editor to appear. When positioning editors, the stack icon indicates a valid spot to drop.

Minimizing Views and Editors

Running out of space? Try minimizing your unused views to reclaim screen real-estate. Each view stack contains a minimize icon along side the maximize icon.



Maximizing Views and Editors

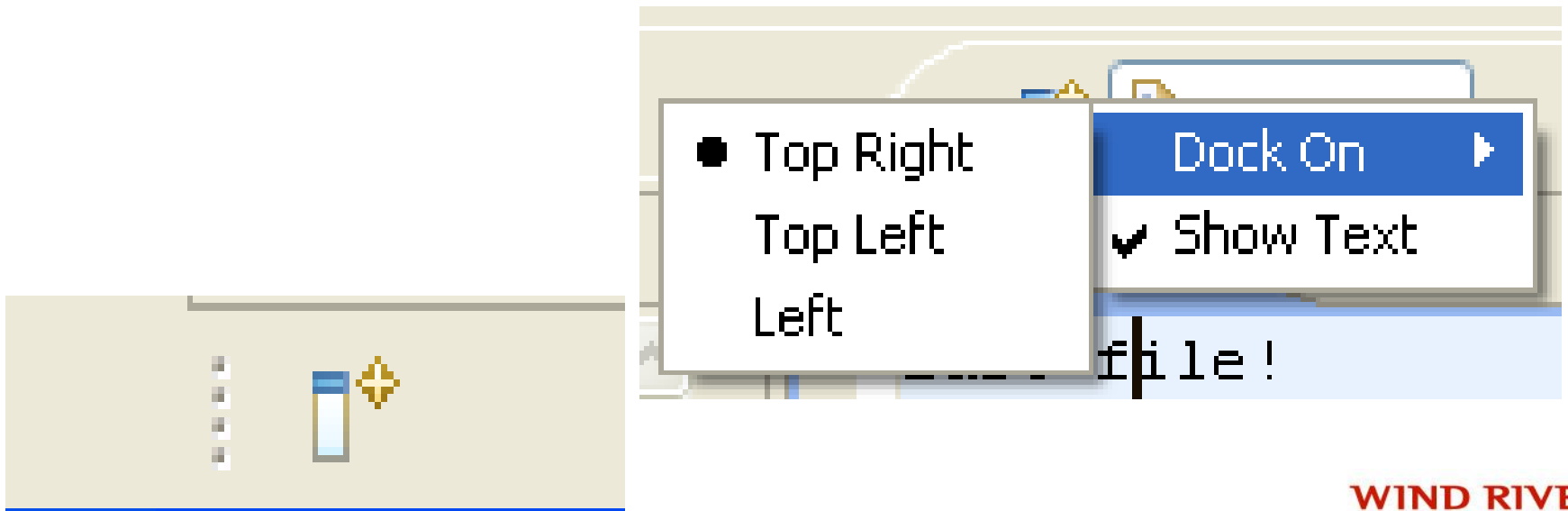
You can maximize a view or editor by double-clicking on the view's title bar or the editor's tab. Double-click again to restore it to its usual size.

Managing screen real estate with fast views

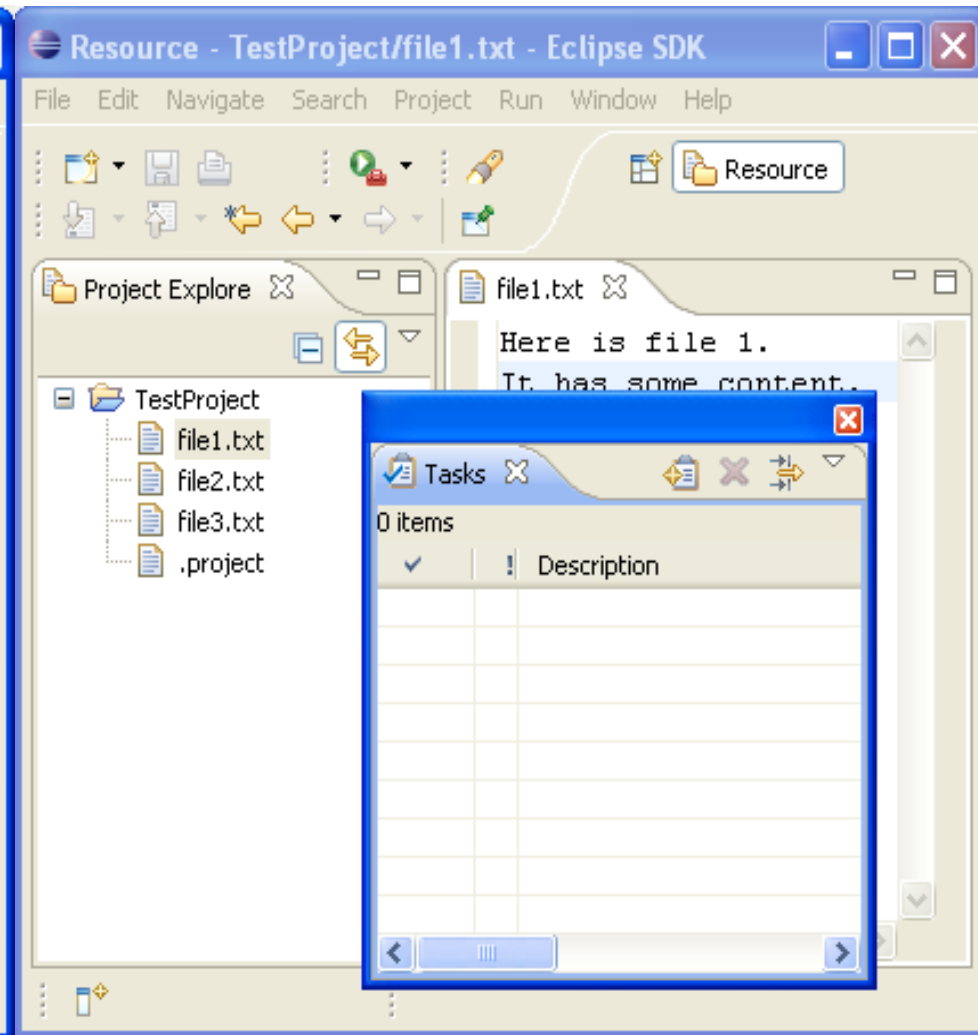
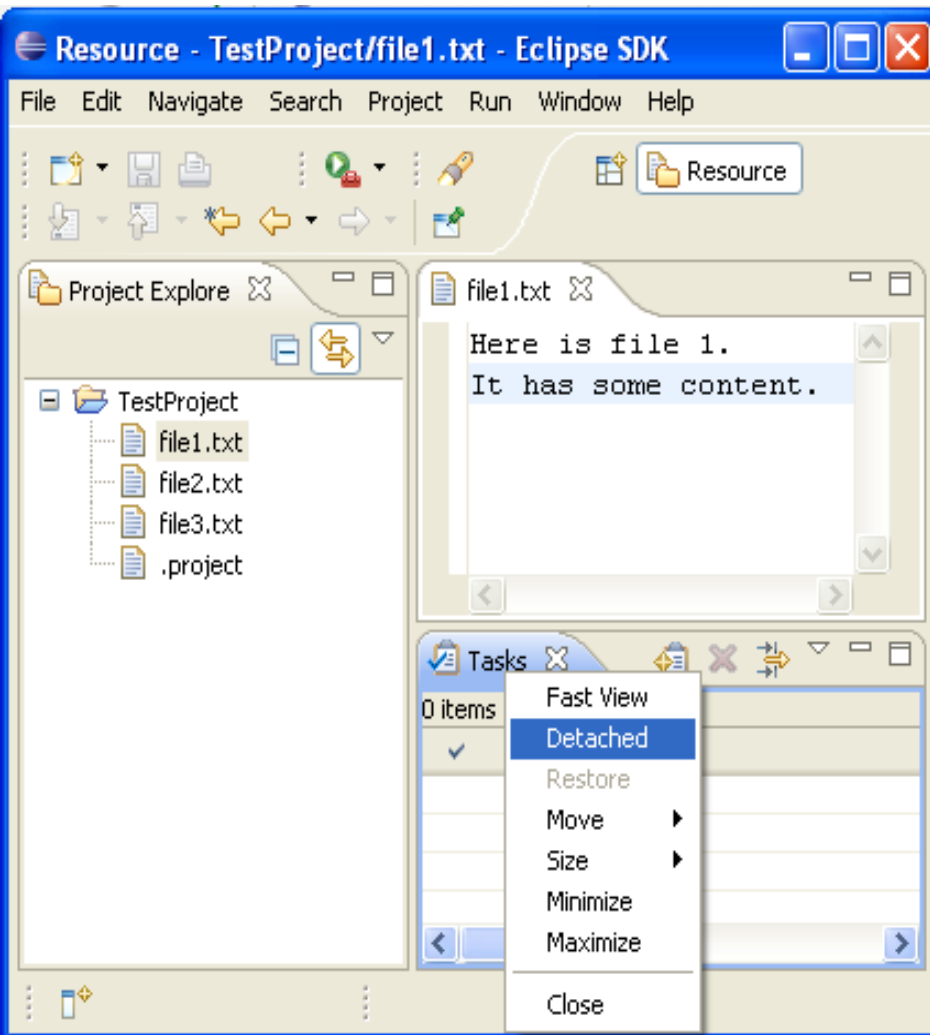
Use fast views to free up screen real estate while keeping views easily accessible. Clicking on the icon for a fast view temporarily reveals it over top of the other views. The fast view retracts as soon you click outside of it. The **Fast View** command in the view's system menu toggles whether it is a fast view. You can also create a fast view by dragging a view onto the Fast View Bar in the bottom left hand corner.

Fast Views and the Perspective Bar

The fast view and perspective bars may be docked in different locations, independent of one another. By default the Perspective Bar is located in the upper right hand corner of the screen. It may also be docked on the top left, under the main toolbar or to the far left. It may be moved via the perspective bar context menu or via the **General > Appearance** preference page.



Detached Views



Restoring a perspective's layout

Rearranging and closing the views in a perspective can sometimes render it unrecognizable and hard to work with. To return it to a familiar state, use **Window > Reset Perspective**.

User customizable key bindings

Keys ← ▾ → ▾

Scheme: ▾

| Command ▲ | Binding | When | Category | User |
|---------------------|-------------------|---------------------|-----------|------|
| Activate Editor | F12 | In Windows | Window | |
| Add Block Comment | Ctrl+Shift+/ * | Editing Java Source | Source | |
| Add Import | Ctrl+Shift+M | Editing Java Source | Source | |
| Add Javadoc Comment | Alt+Shift+J | In Windows | Source | |
| Add Memory Block | Ctrl+Alt+M | In Memory View | Run/Debug | |
| All Instances | Ctrl+Shift+N | In Windows | Run/Debug | |
| Backward History | Alt+Left | In Windows | Navigate | |
| Breakpoints | Alt+Shift+Q, B | In Windows | Views | |

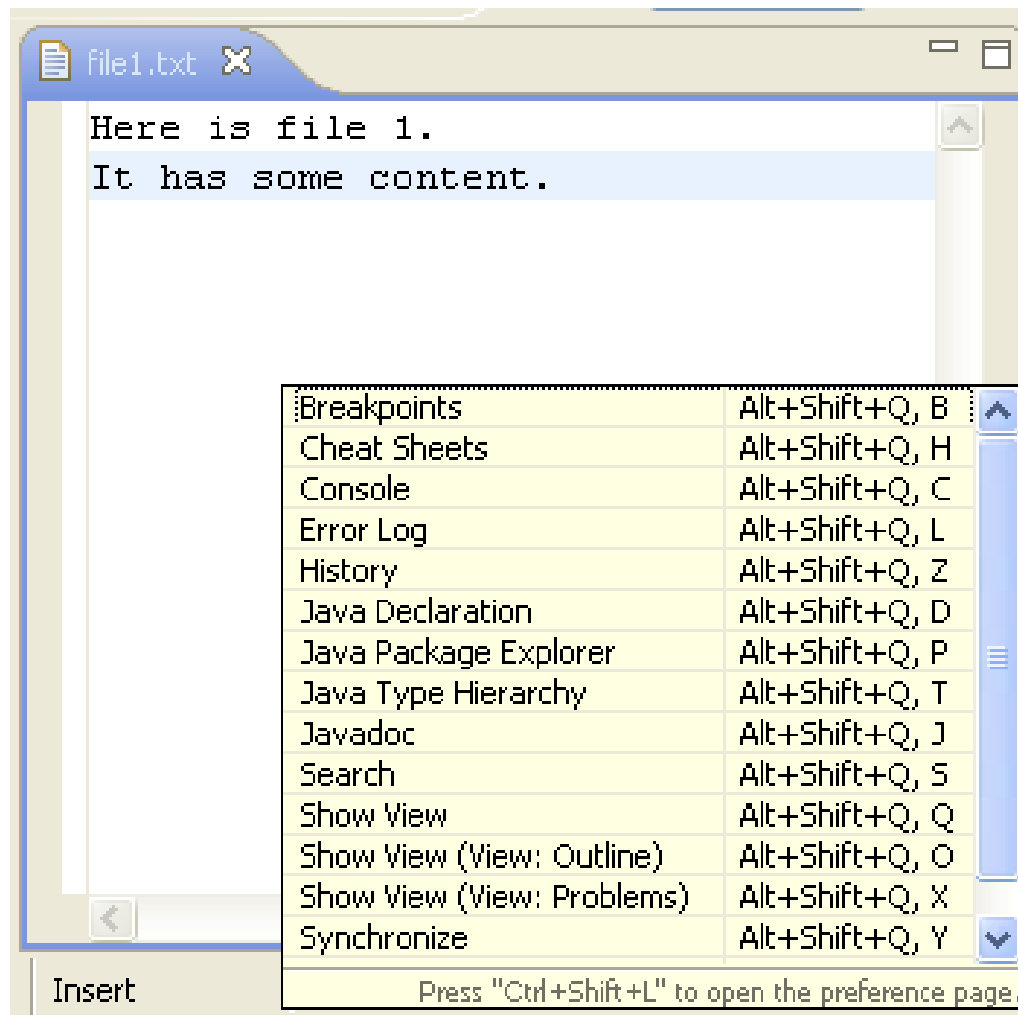
Include unbound commands

Name: Description:

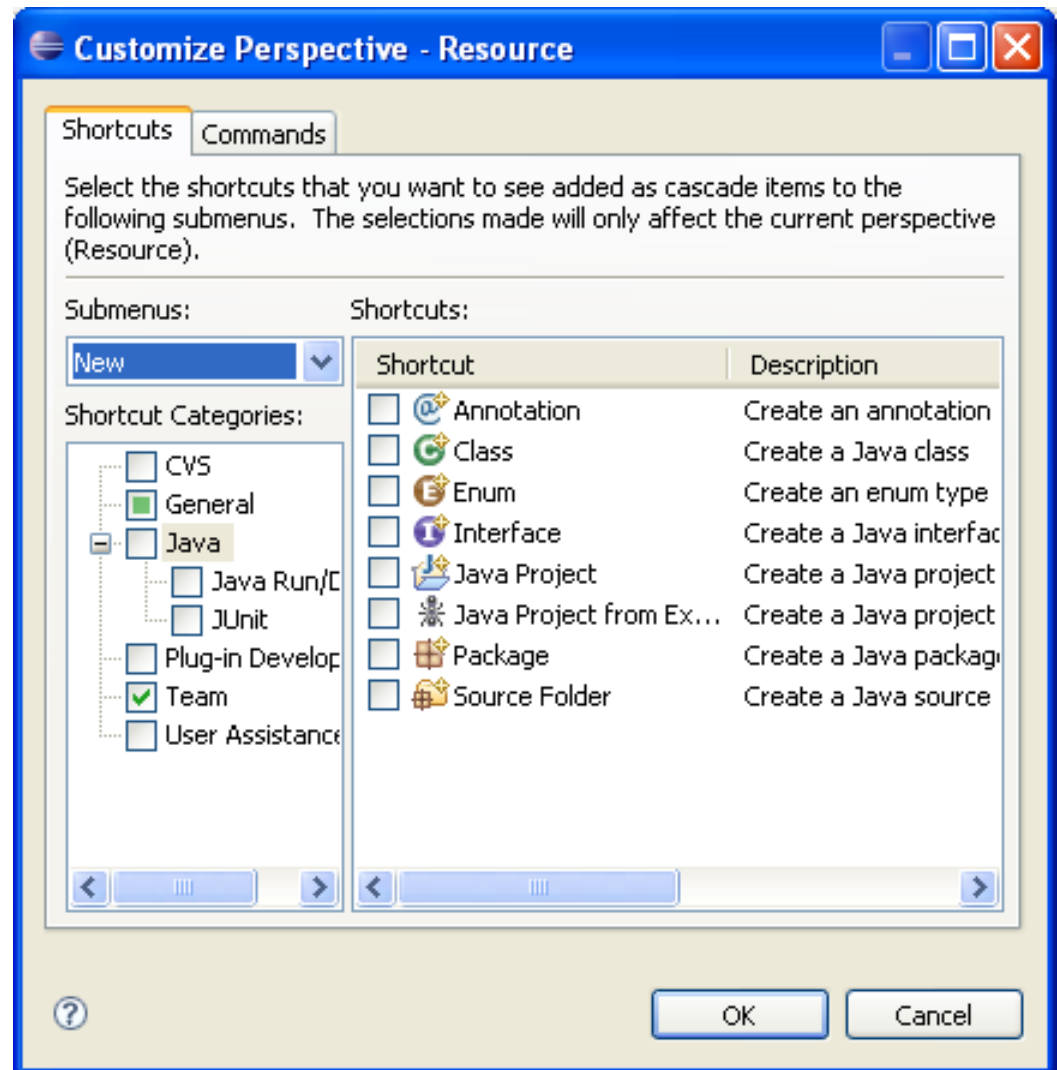
Binding: ▾

* in the binding column denotes a key conflict

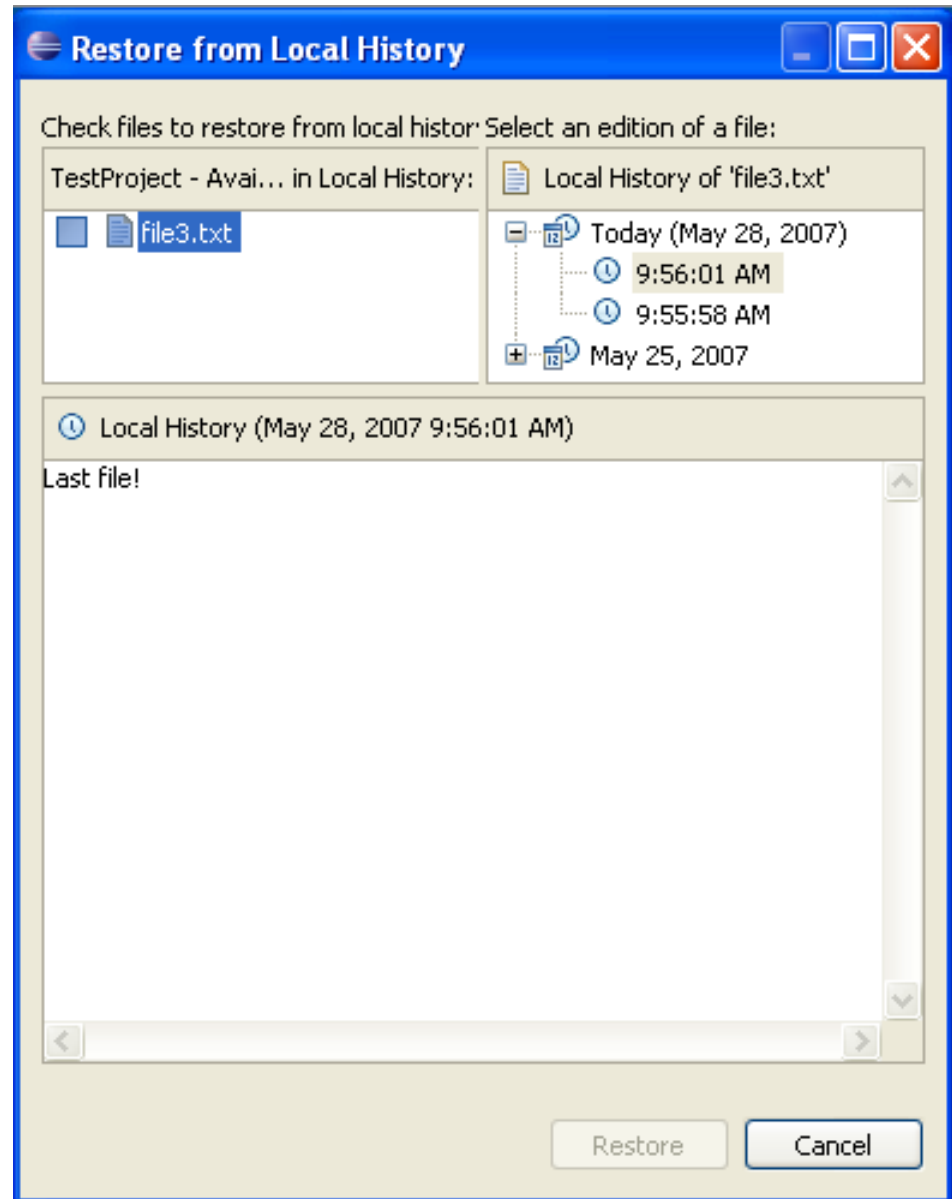
Key Binding Assistance



Customizing toolbar and menu bar



Restoring deleted resources

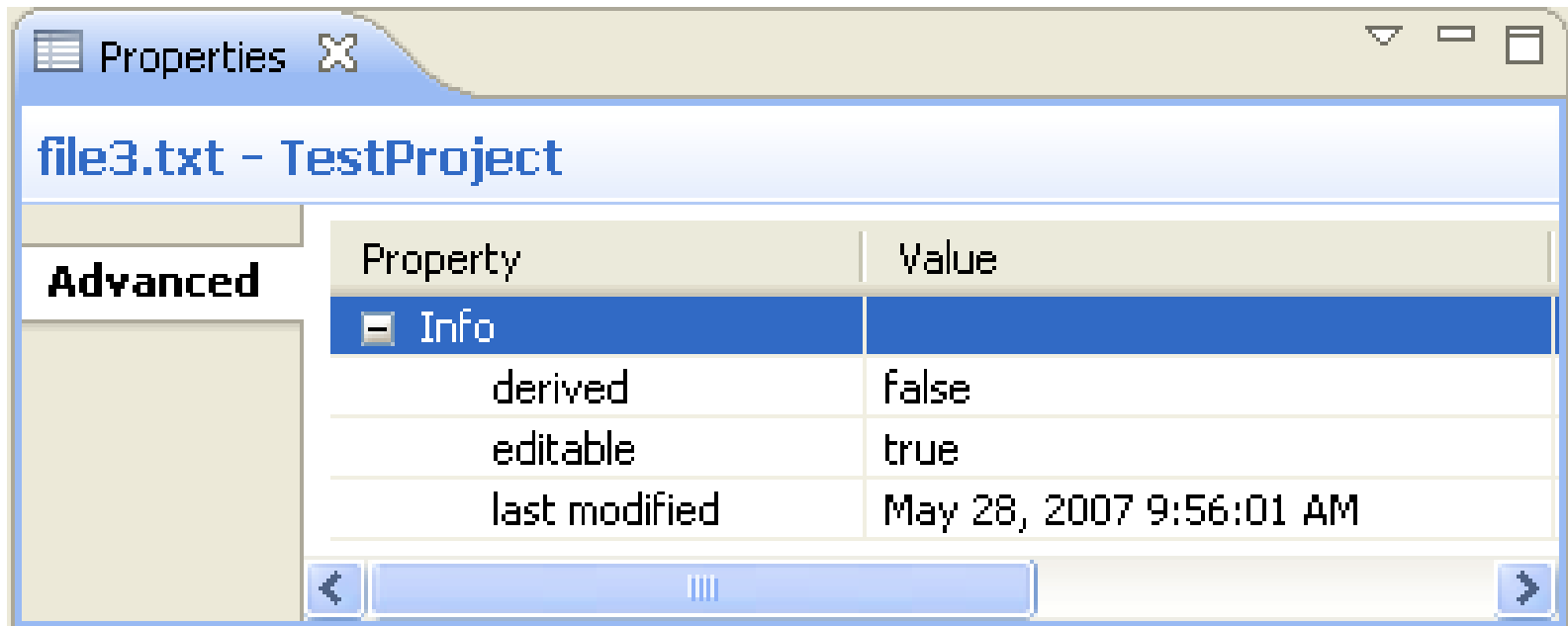


Faster workspace navigation

Navigate > Open Resource (Ctrl+Shift+R) brings up a dialog that allows you to quickly locate and open an editor on any file in the workspace. In the same vein, **Navigate > Go To > Resource** expands and selects the resource in the Project Explorer view itself, if it has focus.

Viewing resource properties

Use the Properties view (**Window > Show View > Properties**) when viewing the properties for many resources. Using this view is faster than opening the Properties dialog for each resource.



Quickly find a resource

Use the **Navigate > Go To > Resource** command to quickly find a resource. If the **Go To > Resource** command does not appear in your perspective, you can add it by selecting **Window > Customize Perspective**, then **Other > Resource Navigation**.