

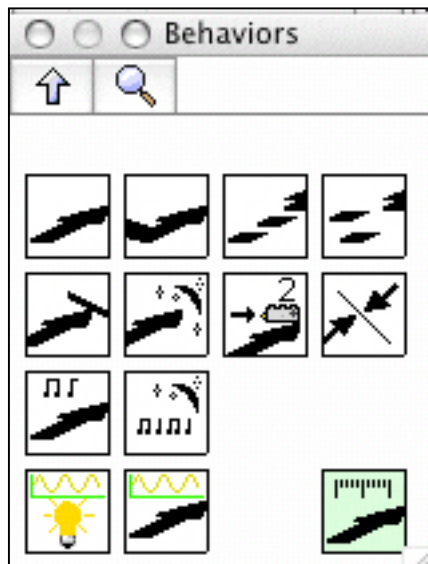
# ROBOLAB 2.9 WORKSHOP

FIRST 2006

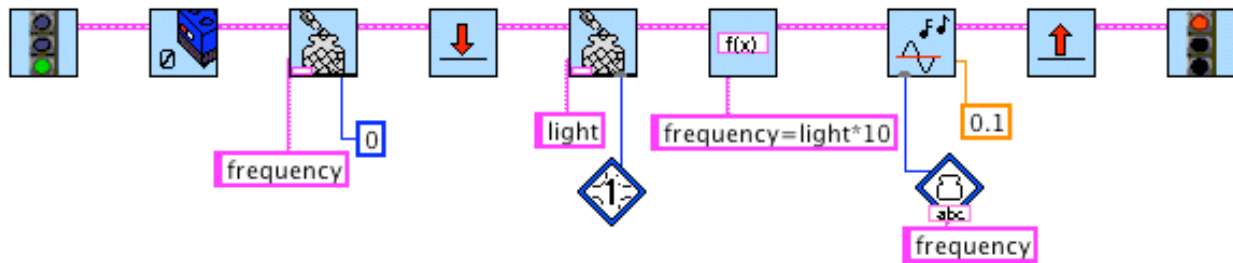
## 1. Try The Behaviors!



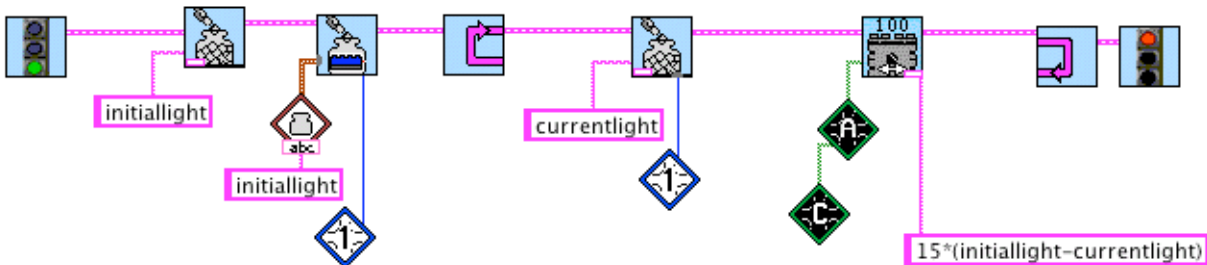
Behaviors



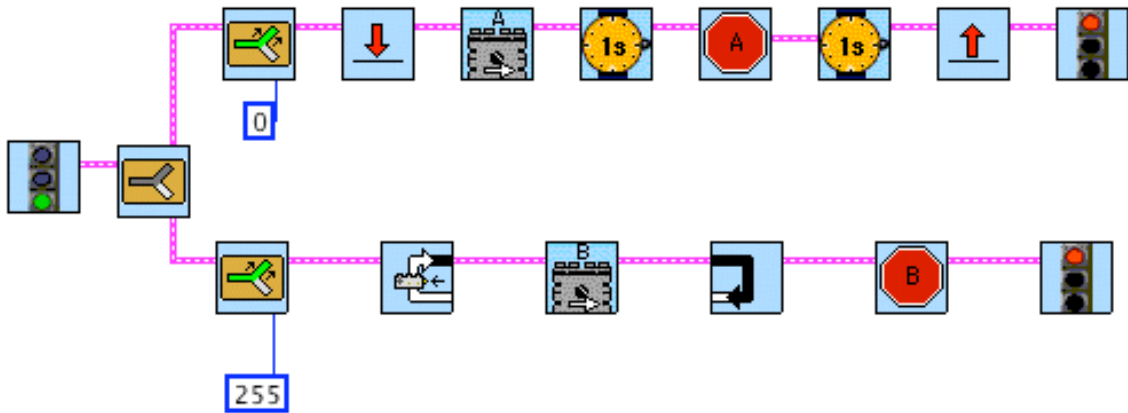
## 2. Make an Echo Locator with named containers



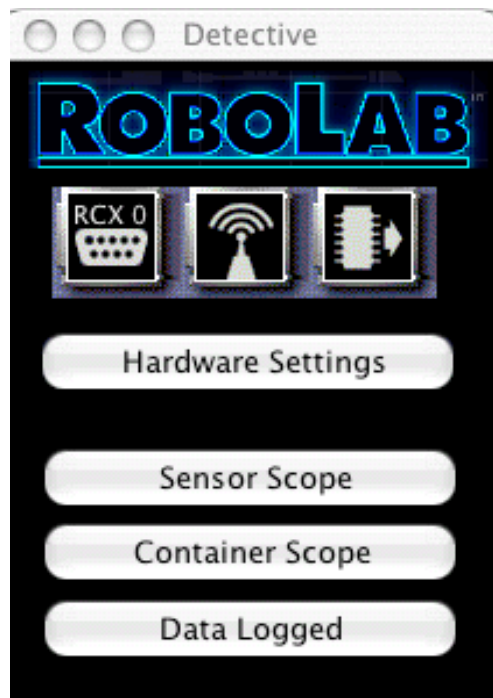
## 3. Make a light (or white follower) with named containers and Motor Forward or Back String



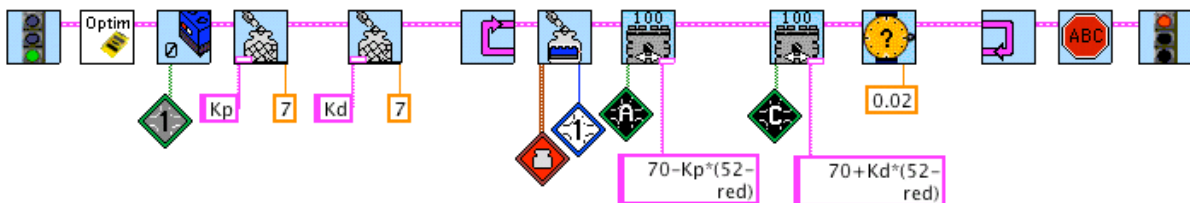
4. Try the new Task Priority



5. Try Detective – look at your container values or hardware settings



6. Try a Proportional Line Follower



7. Coming Summer 2006 – [www.legoengineering.com](http://www.legoengineering.com)